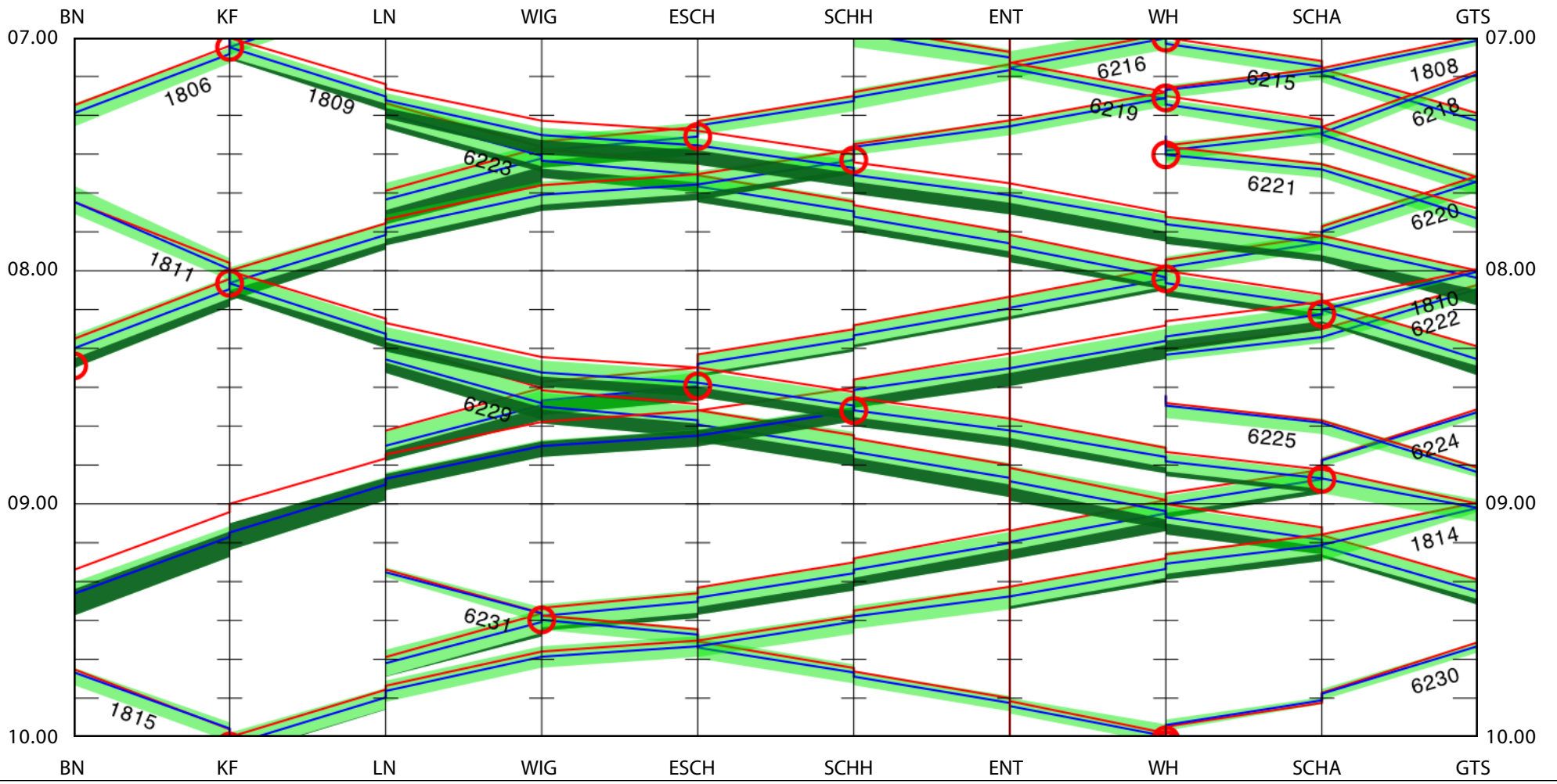


BN - GTS

| MON | TUE | WED | THU | FRI | SAT | SUN |

train-% selected: 95 % maximum delay limit: 5.0 [min]

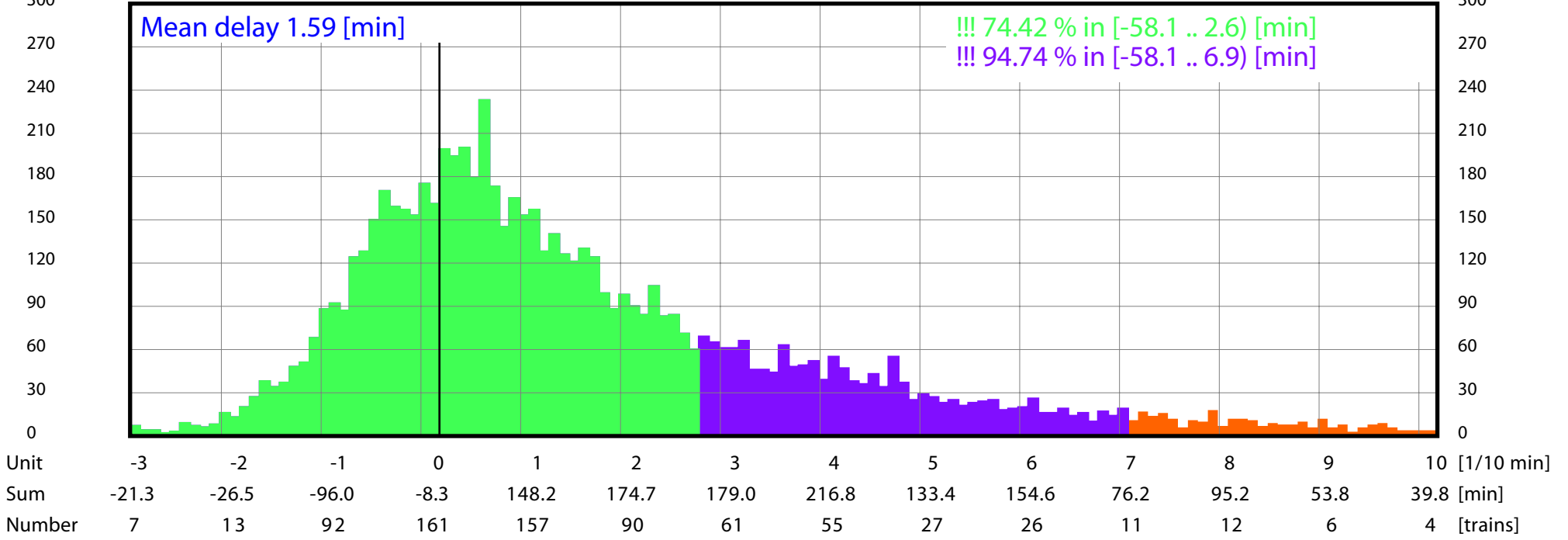


Distribution of Number of Arrivals in BN, KF, LN, ENT, LZ.

Number | MON | TUE | WED | THU | FRI | SAT | SUN |
0:00 - 24:00

Mean delay 1.59 [min]

!!! 74.42 % in [-58.1 .. 2.6] [min]
!!! 94.74 % in [-58.1 .. 6.9] [min]



Capacity during day arrival in BN

[Slots] | MON | TUE | WED | THU | FRI |
00:00 - 24:00

