

Trends in Swiss commuting

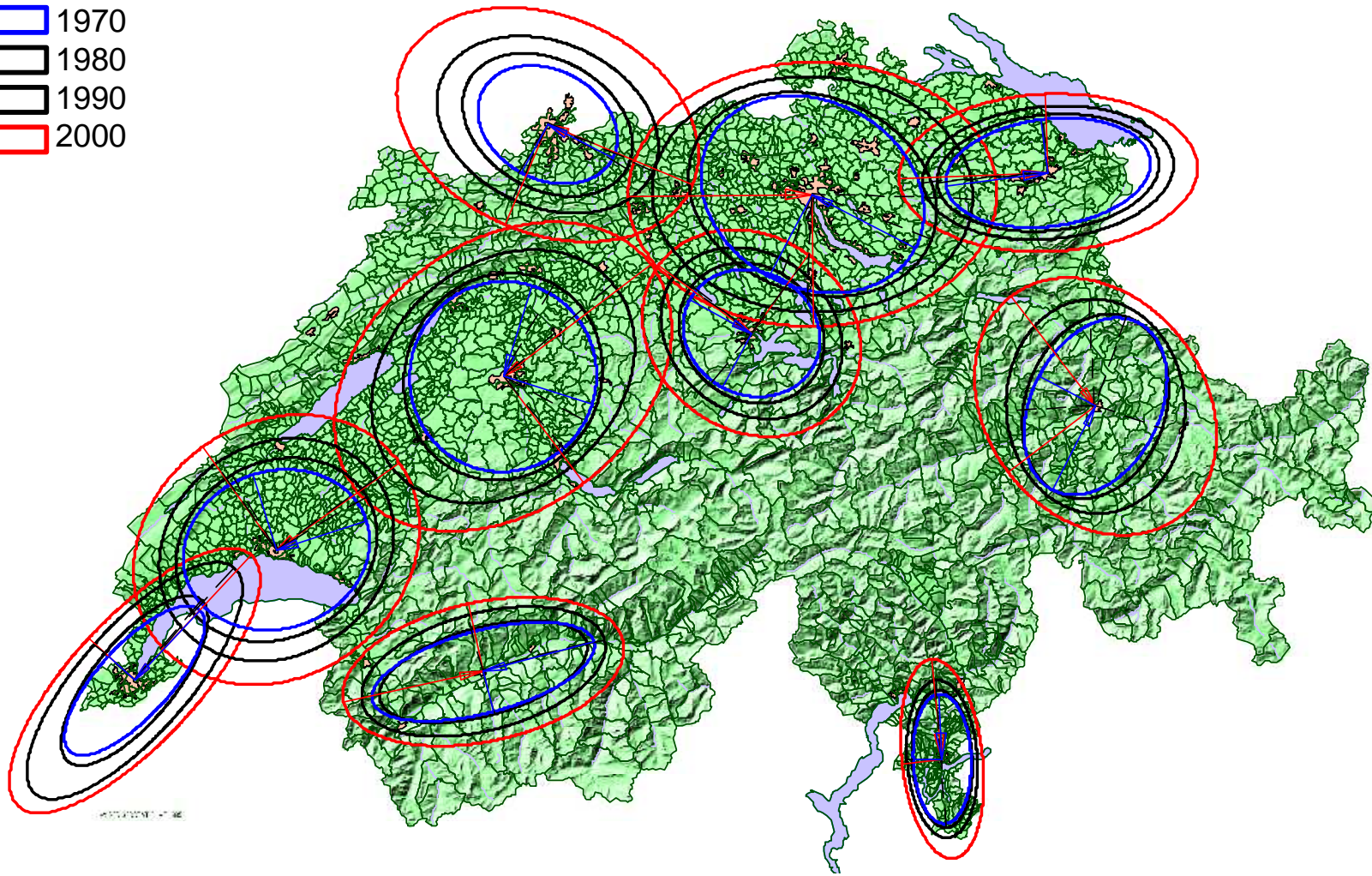
The map is based on the official Swiss census commuting matrices by municipality (about 3000 for 7.5 mio. inhabitants).

The ellipses indicate the area from which 95% of commuters travel to the respective central destination.

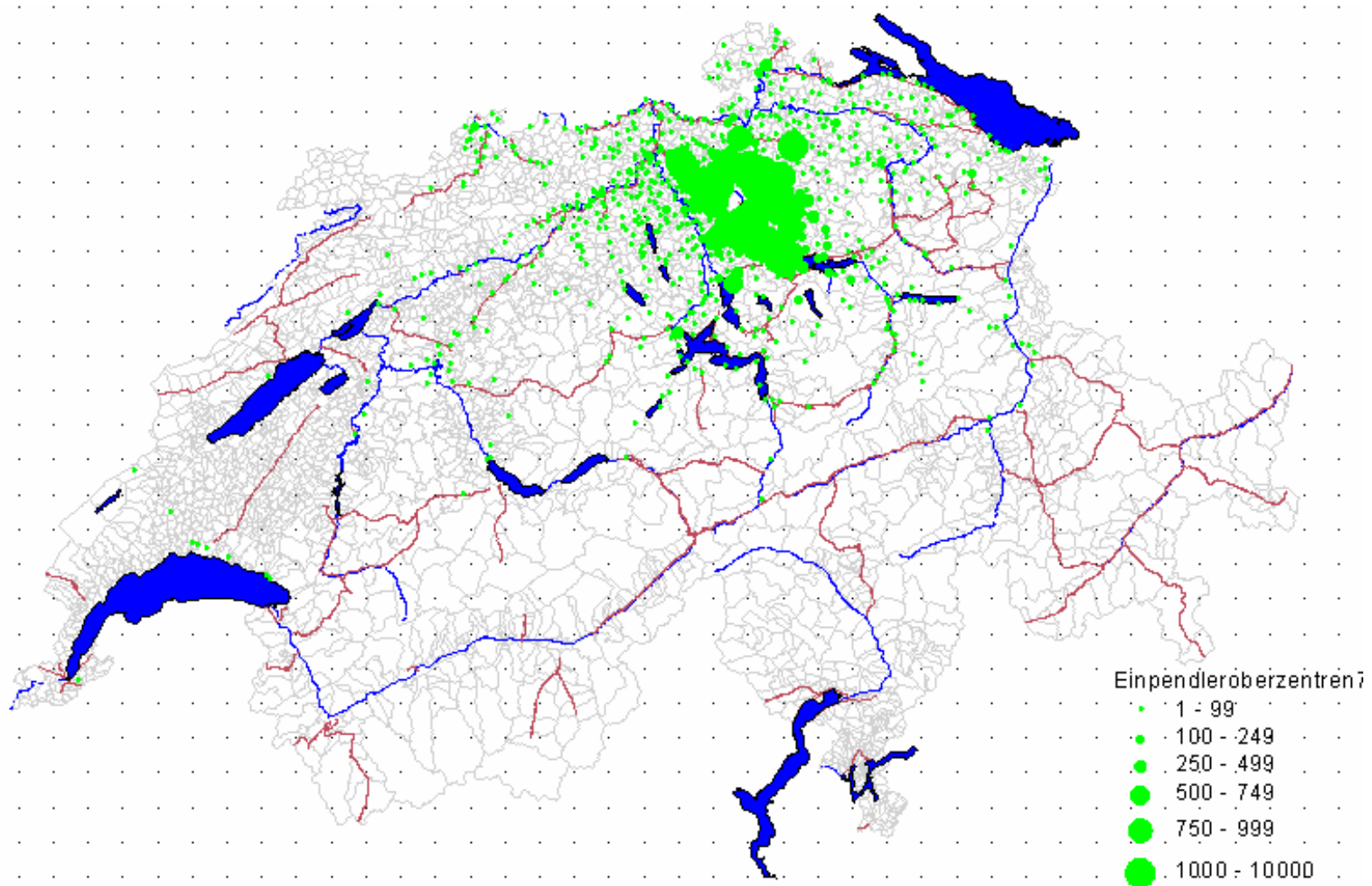
The ellipses have their form by assumption. Kernel density estimates show more complex patterns of the origins of the commuters; see example for Zürich in 2000.

Development of the Swiss commute sheds since 1970

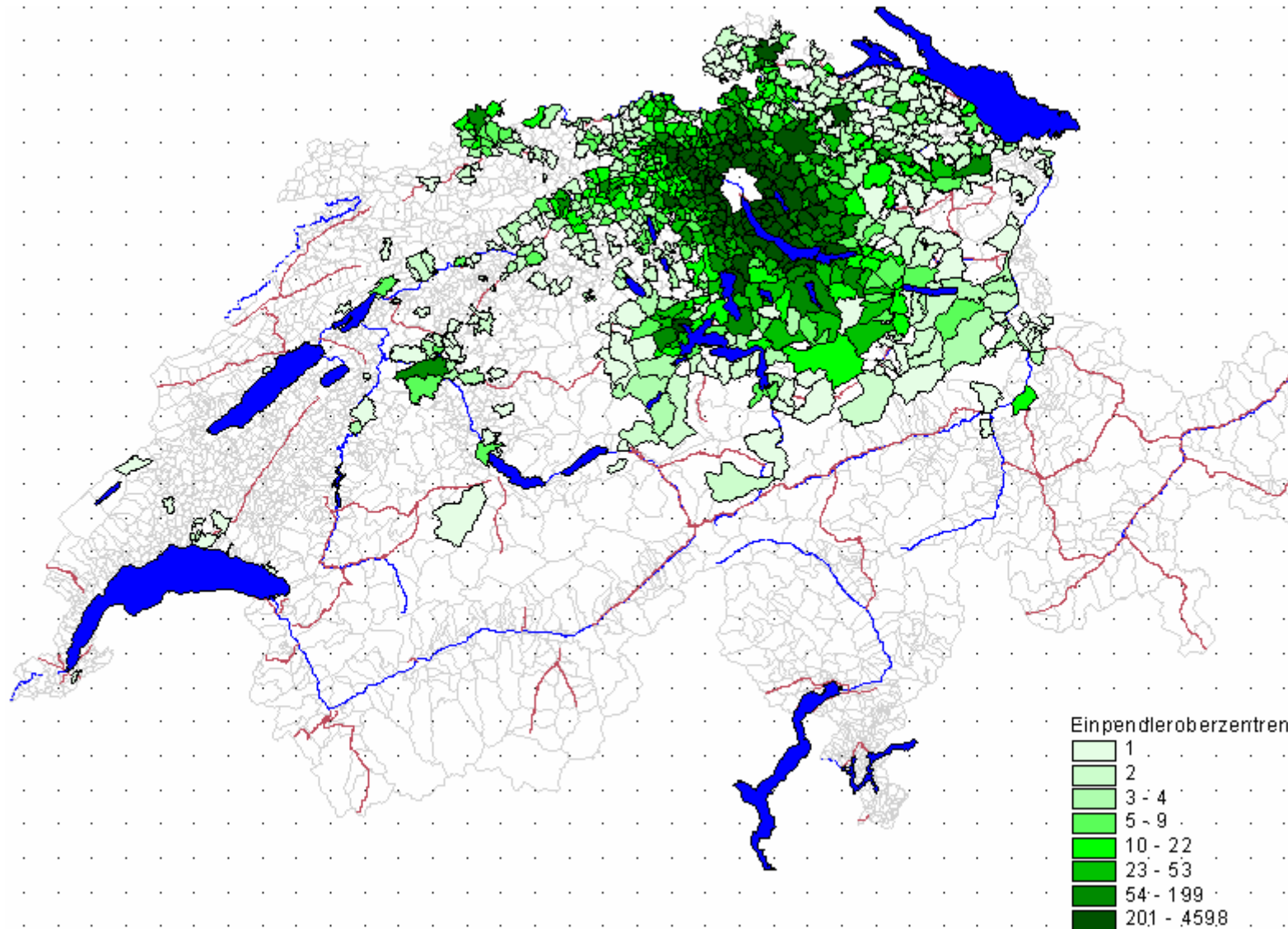
- 1970
- 1980
- 1990
- 2000



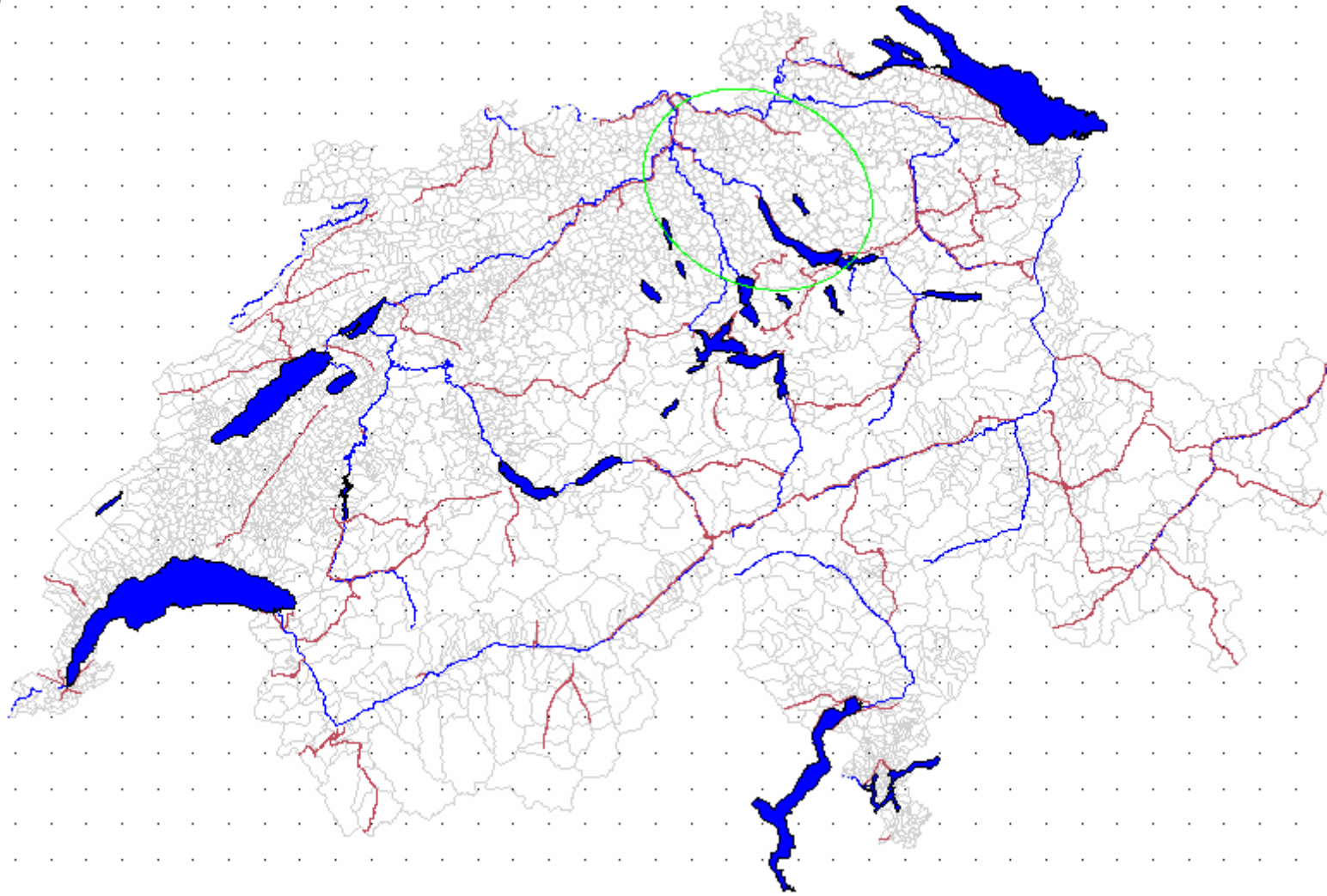
Commute shed Zürich 1970: Origins



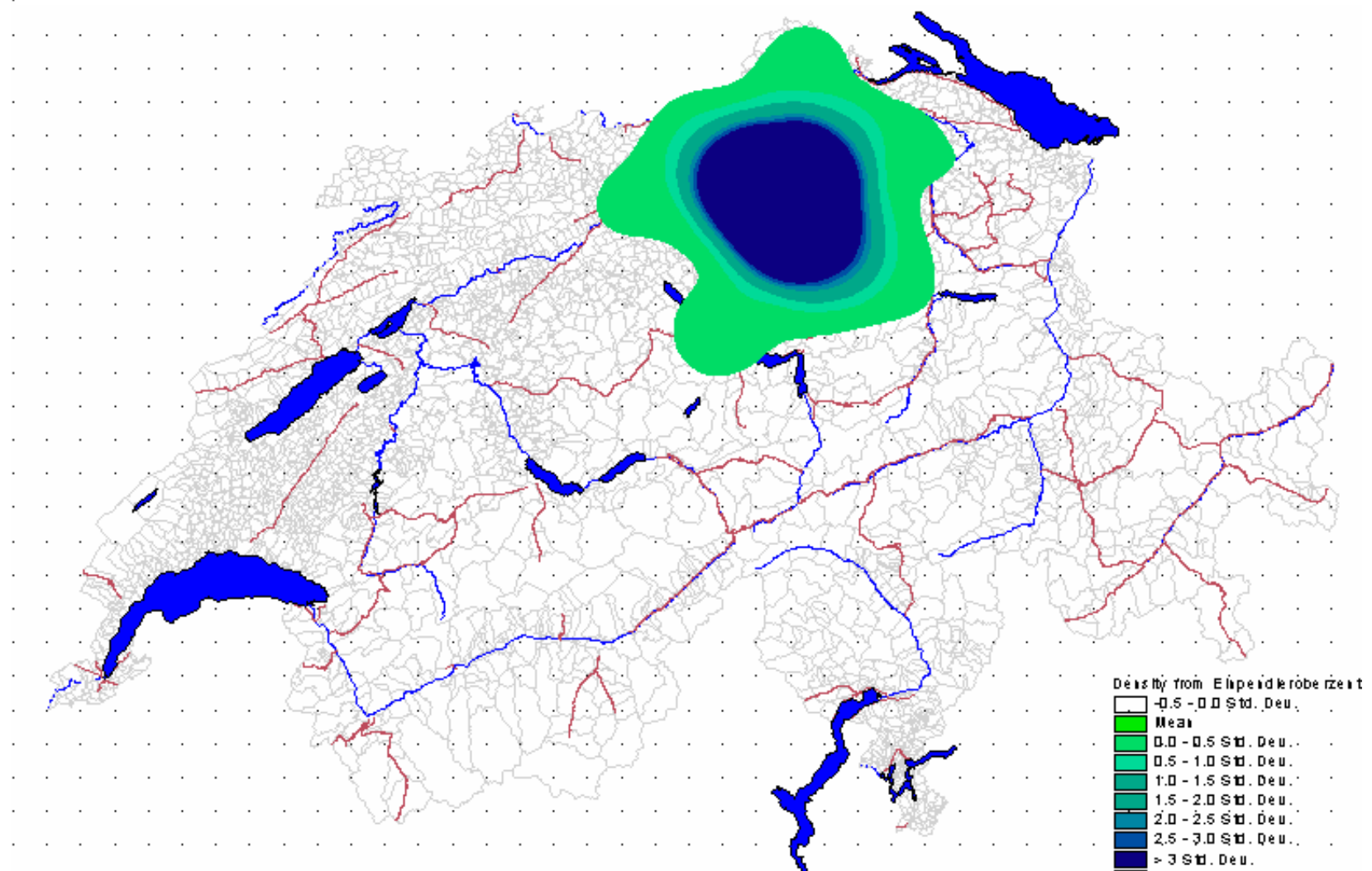
Commute shed Zürich 1970: Origins



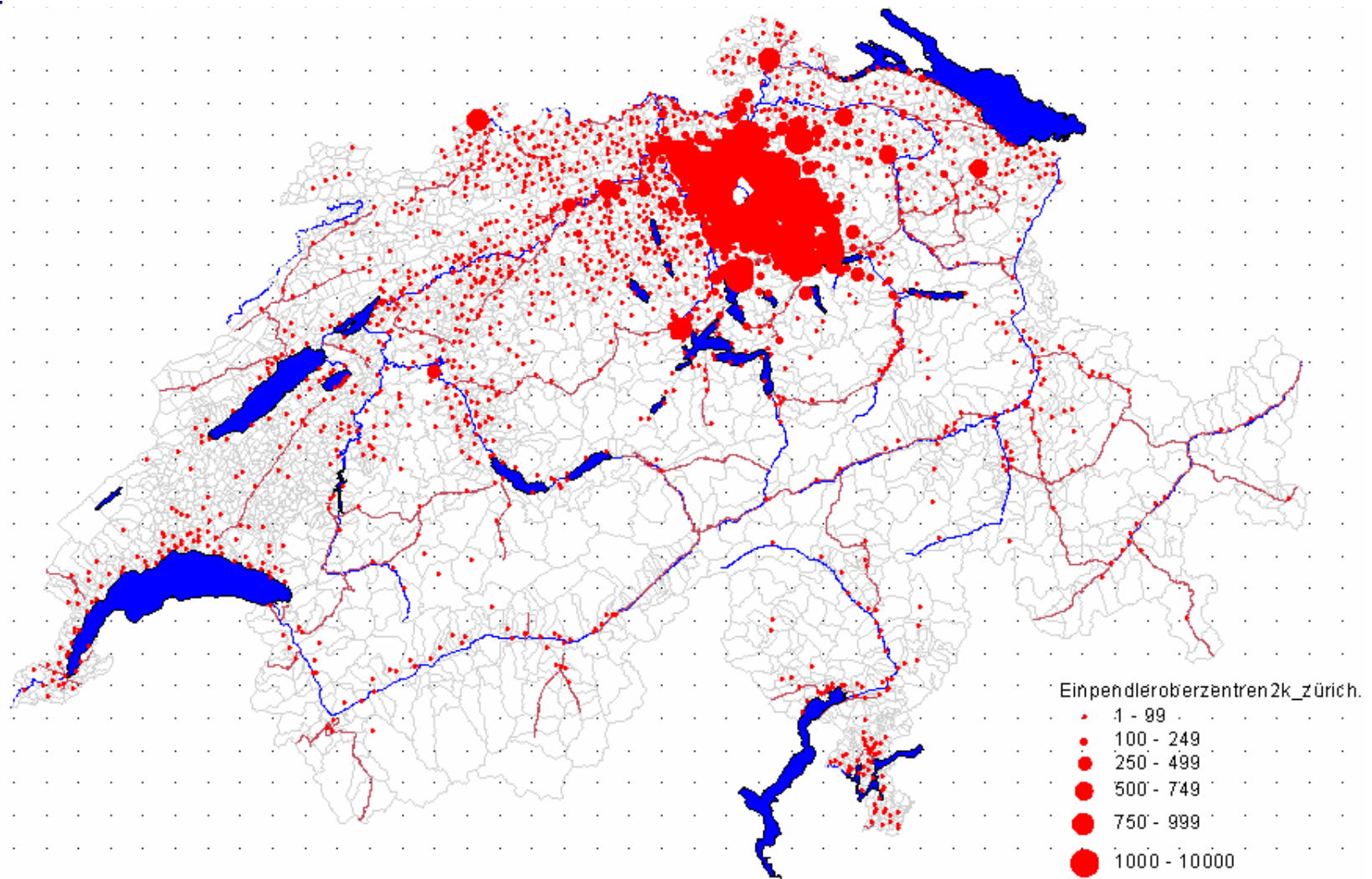
Commute shed Zürich 1970: 95% confidence ellipse



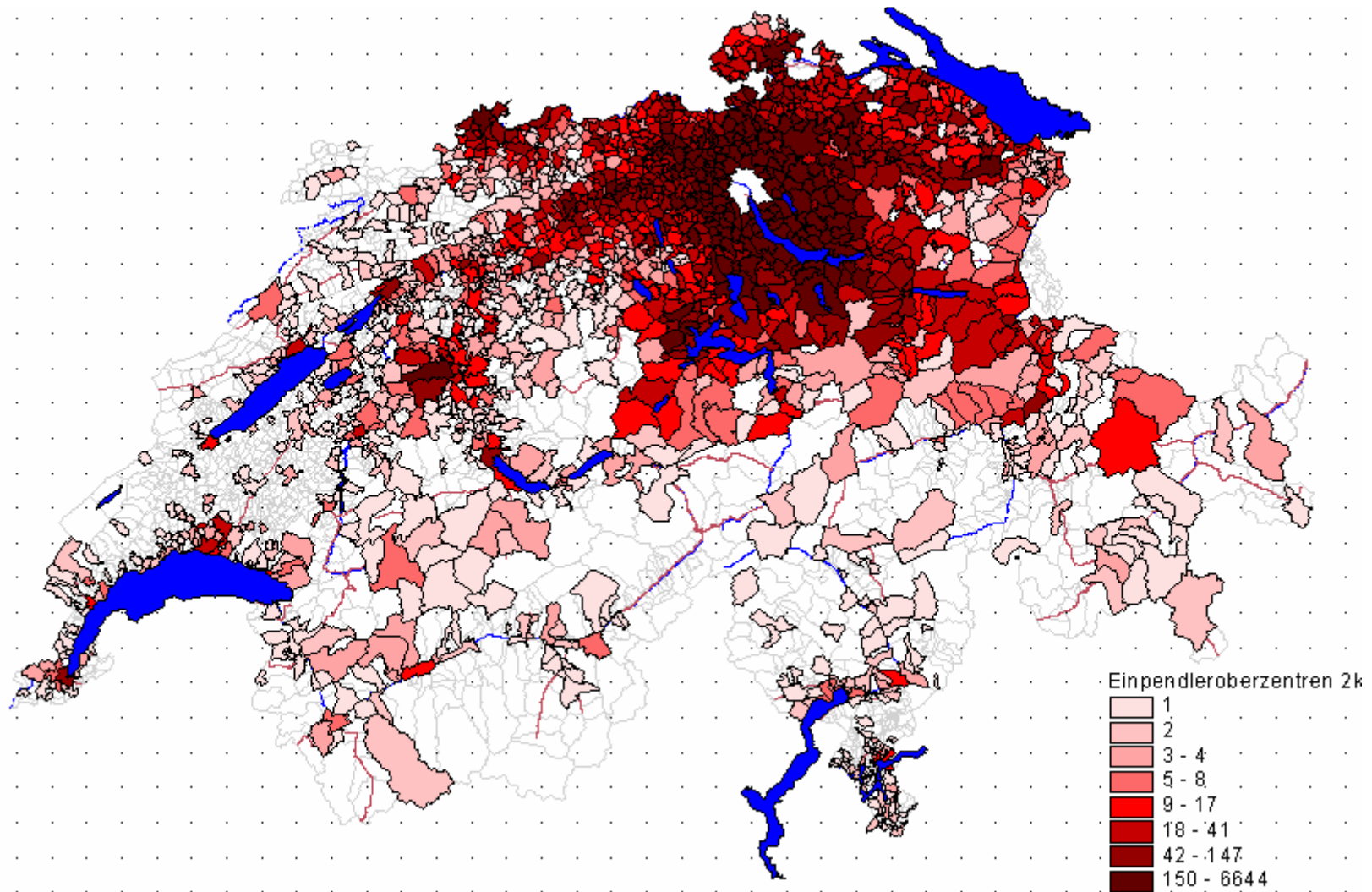
Commute shed Zürich 1970: Kernel density estimates



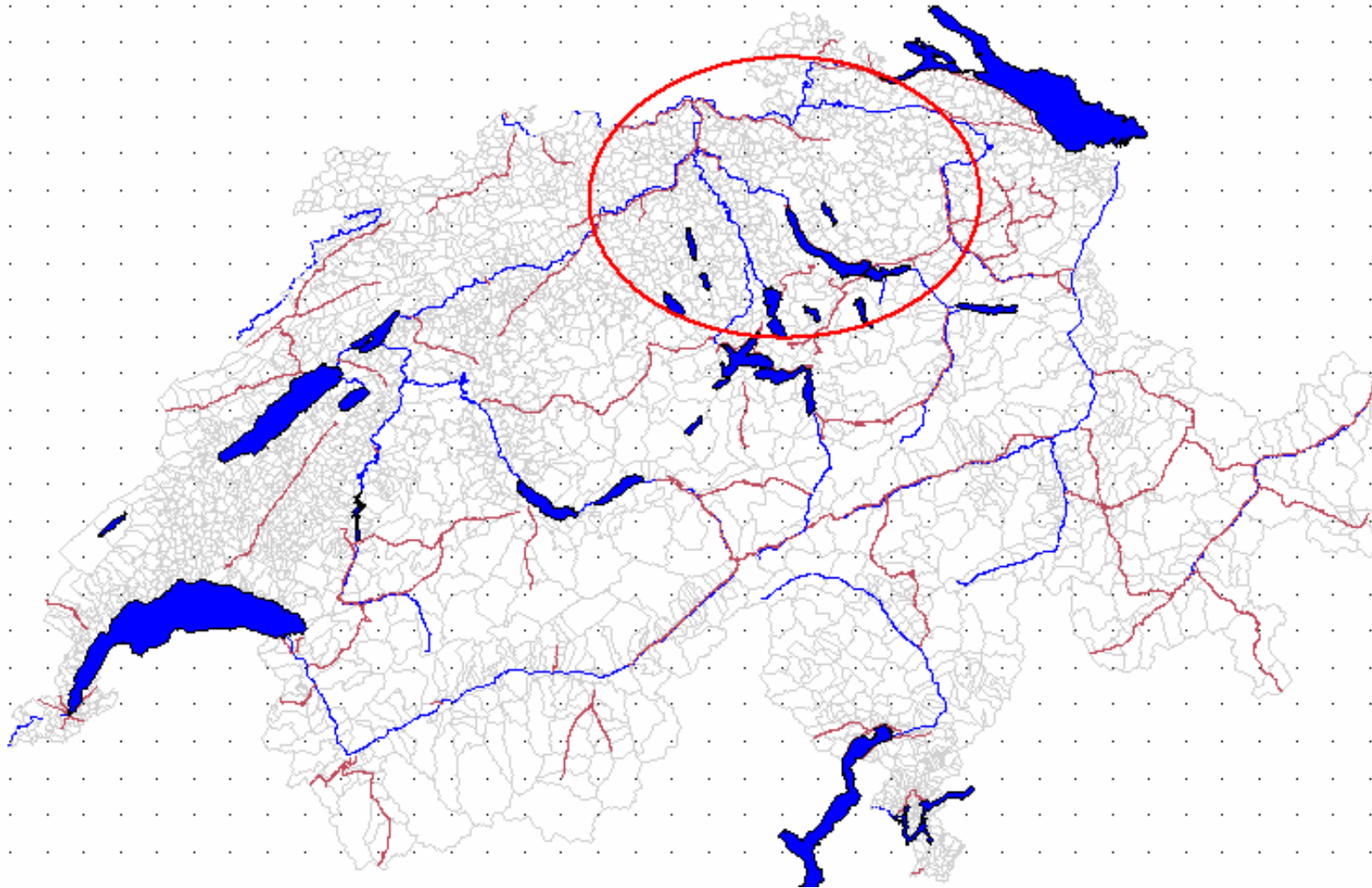
Commute shed Zürich 2000: Origins



Commute shed Zürich 2000: Origins



Commute shed Zürich 2000: 95% confidence ellipse



Commute shed Zürich 2000: Kernel density estimates

