

Preferred citation style for this presentation

K.W. Axhausen and R. Schlich (2003) Leisure: What leisure ?,
A1D08 committee meeting, Washington, D.C., January 2003.

Leisure: What leisure ?

KW Axhausen and R Schlich

IVT
ETH
Zürich

January 2003

 *Institut für Verkehrsplanung und Transportsysteme*
Institute for Transport Planning and Systems

ETH

Eidgenössische Technische Hochschule Zürich
Swiss Federal Institute of Technology Zurich

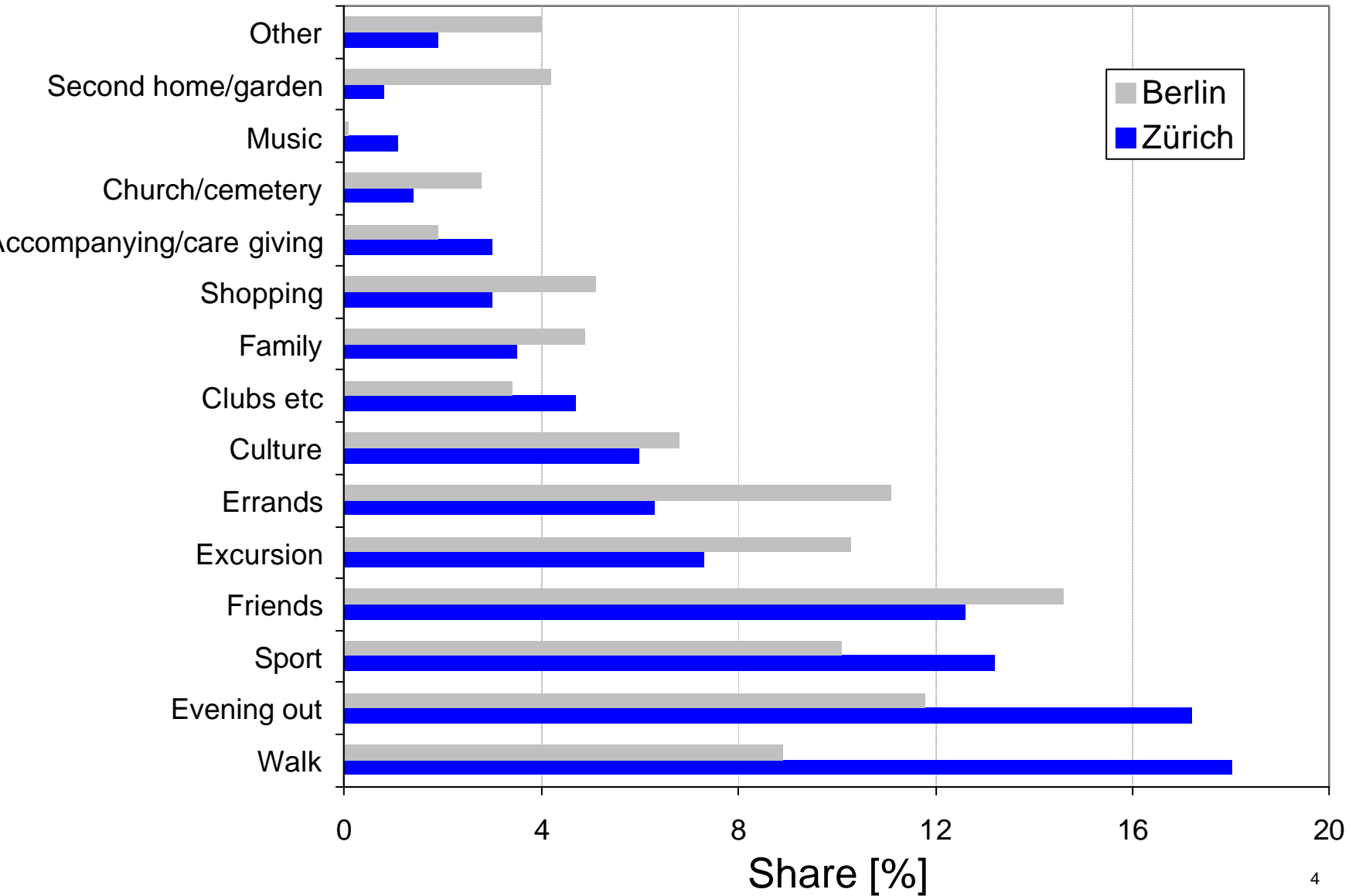
Two results of recent surveys

“Leisure” is a useless categorisation as the internal variability is too large in terms of

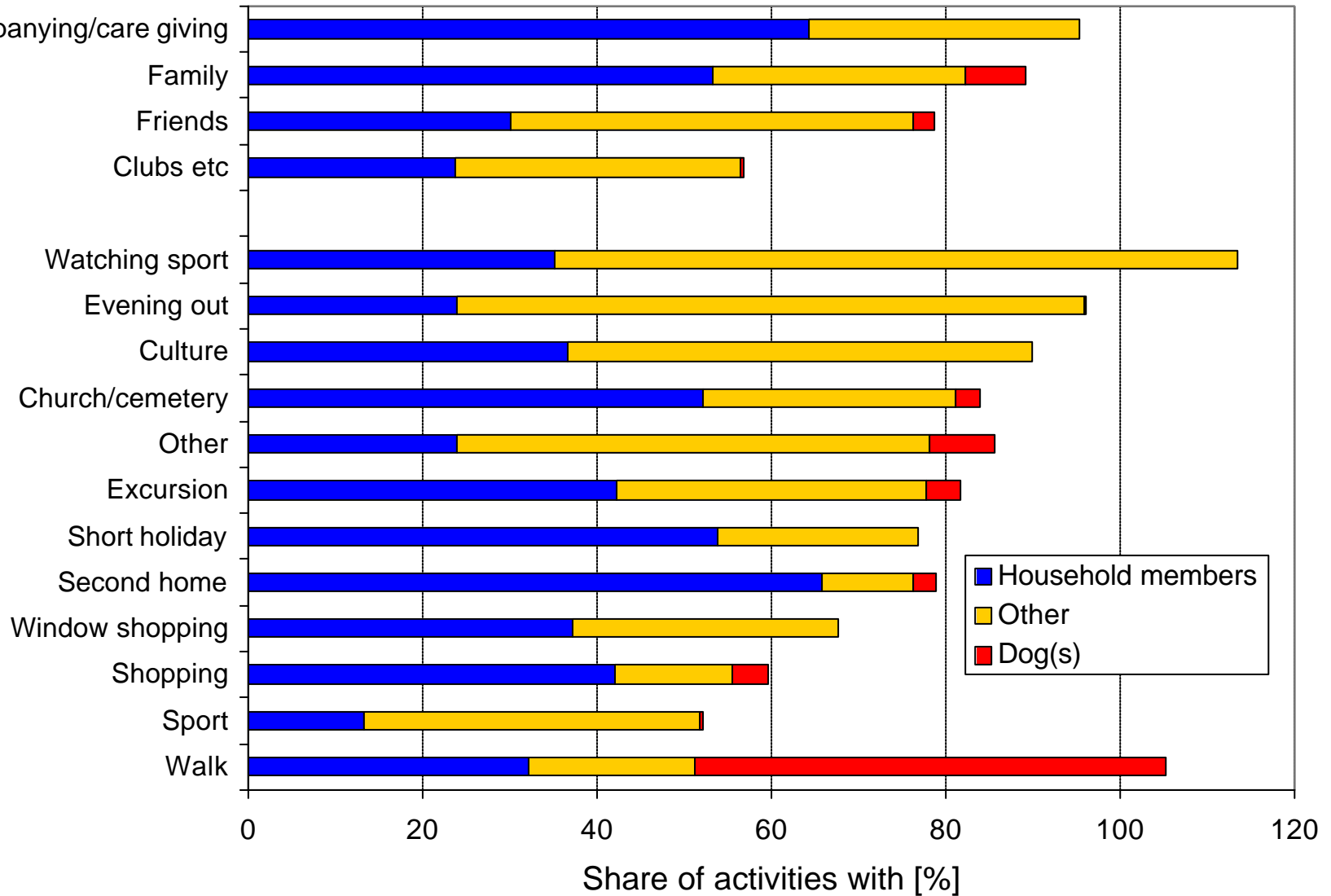
- rhythms
- mode choice
- involvement of family and friends
- expenditure

Strong variety seeking is combined with a concentration on a smaller number of preferred locations

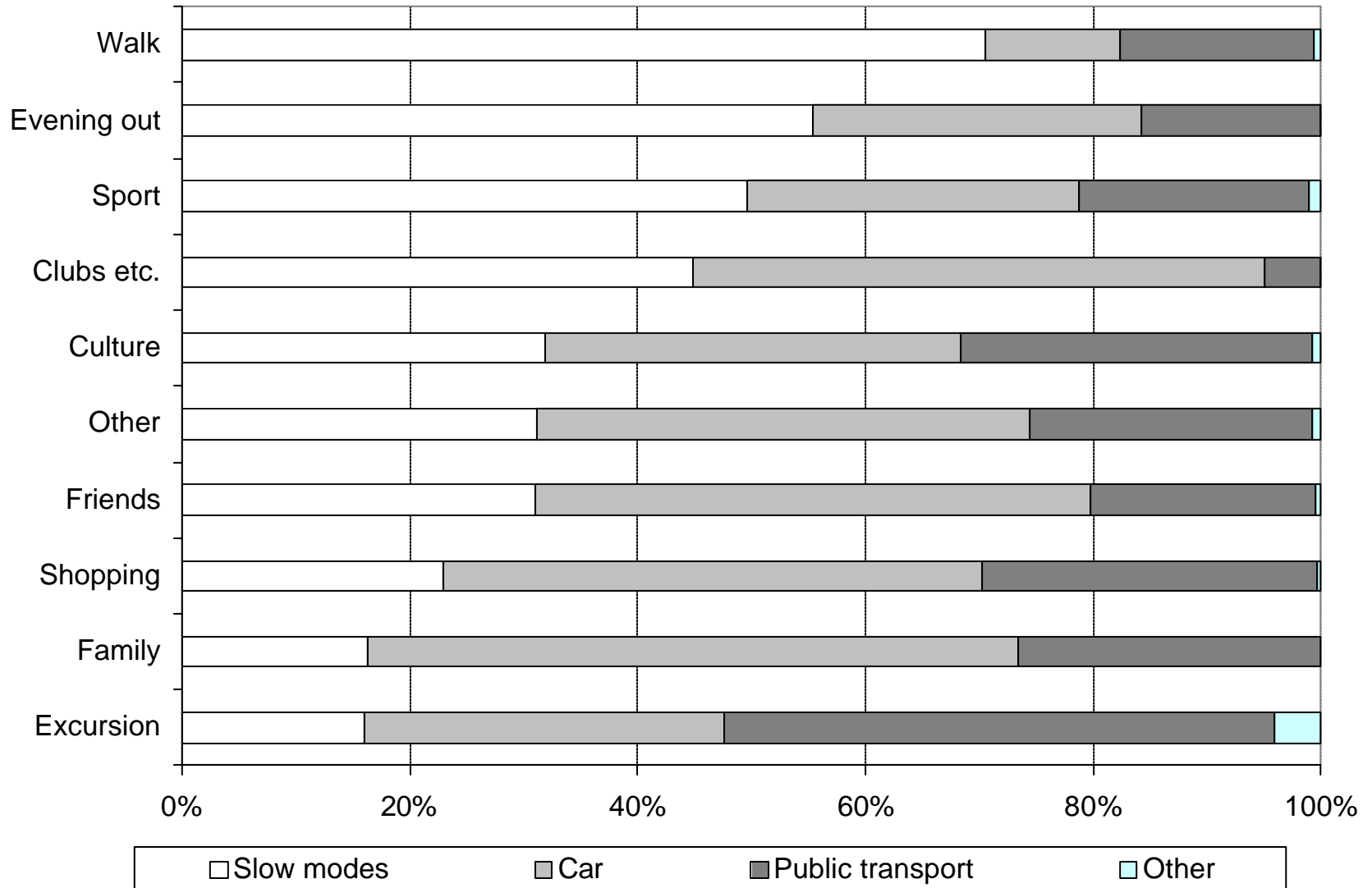
Leisure: Why ?



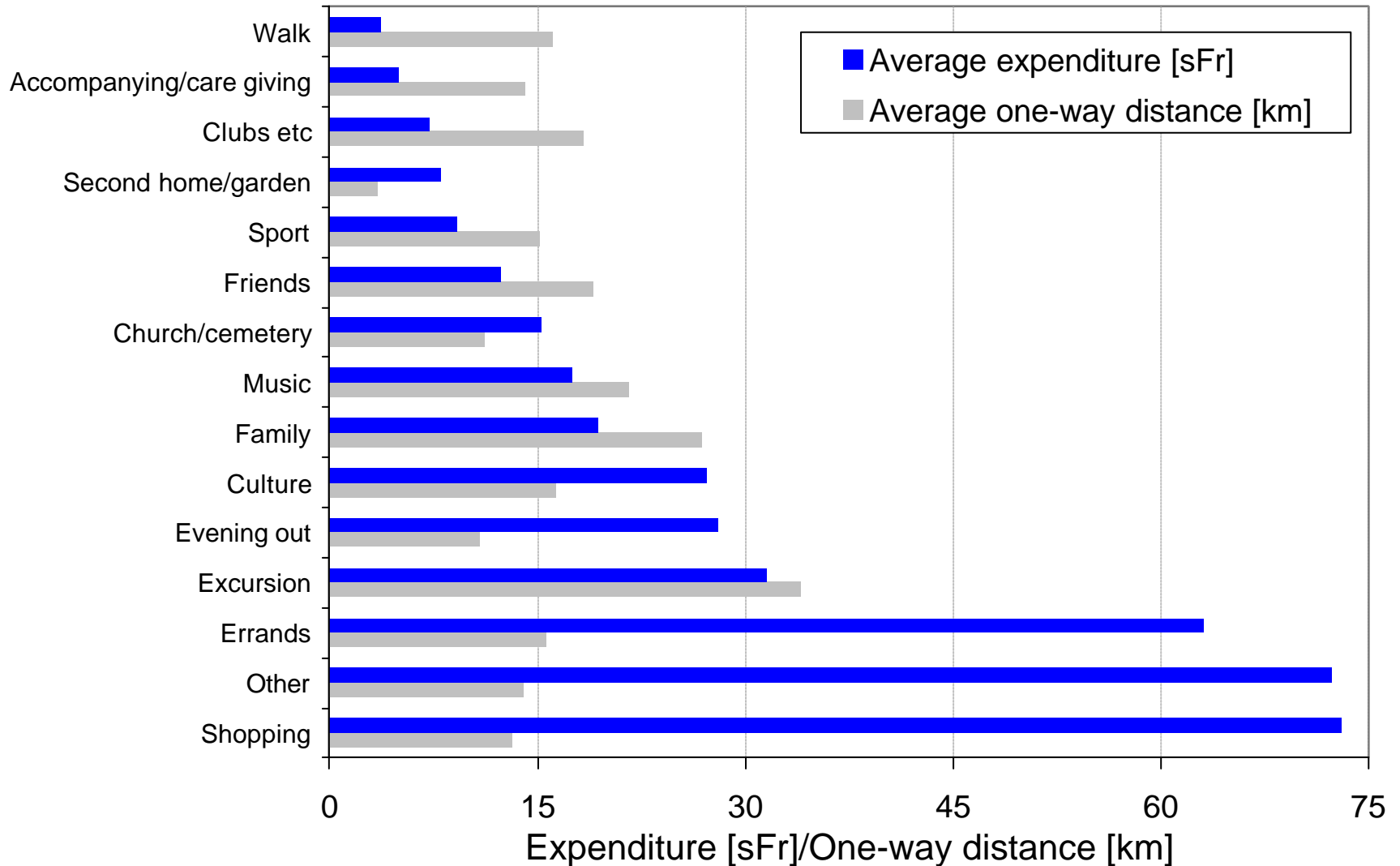
Leisure: With whom ?



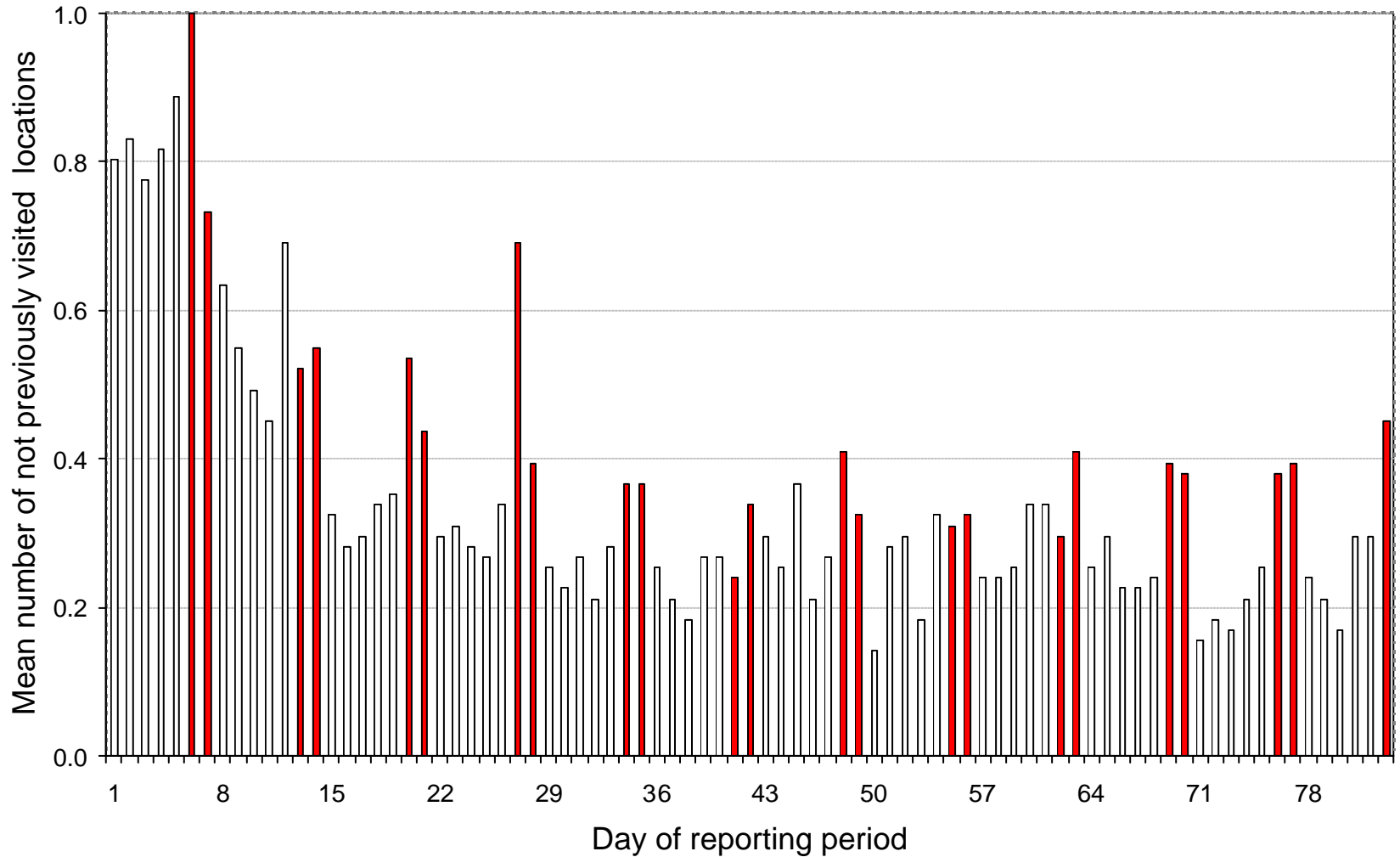
Leisure: What mode ?



Leisure expenditures: How much ?



Leisure: Where ? („location“ = Purpose * zip code)



12-week leisure survey

Brief description:

- Combined time use (all purposes) and activity-survey (out-of-home leisure only)
- Twelve (six) one-week diaries in Zürich (Berlin)
- 70 respondents with a 150 sFr incentive payment (about 10% recruiting rate from a random telephone sample) (hardly any drop-out after the start of the diary)

For details see (in German):

<http://www.ivt.baug.ethz.ch/vrp/ab123.pdf>

<http://www.ivt.baug.ethz.ch/vrp/ab121.pdf>